

**MATERIALS NOTES**

**ROOF**  
BARREL VAULT ROOF TO BE CONSTRUCTED USING BUILT UP STEEL CLADDING.  
RADIUS SET TO INSIDE OF LINER SHEET AT 75m  
COLOUR - GOOSEWING GREY BS10A05

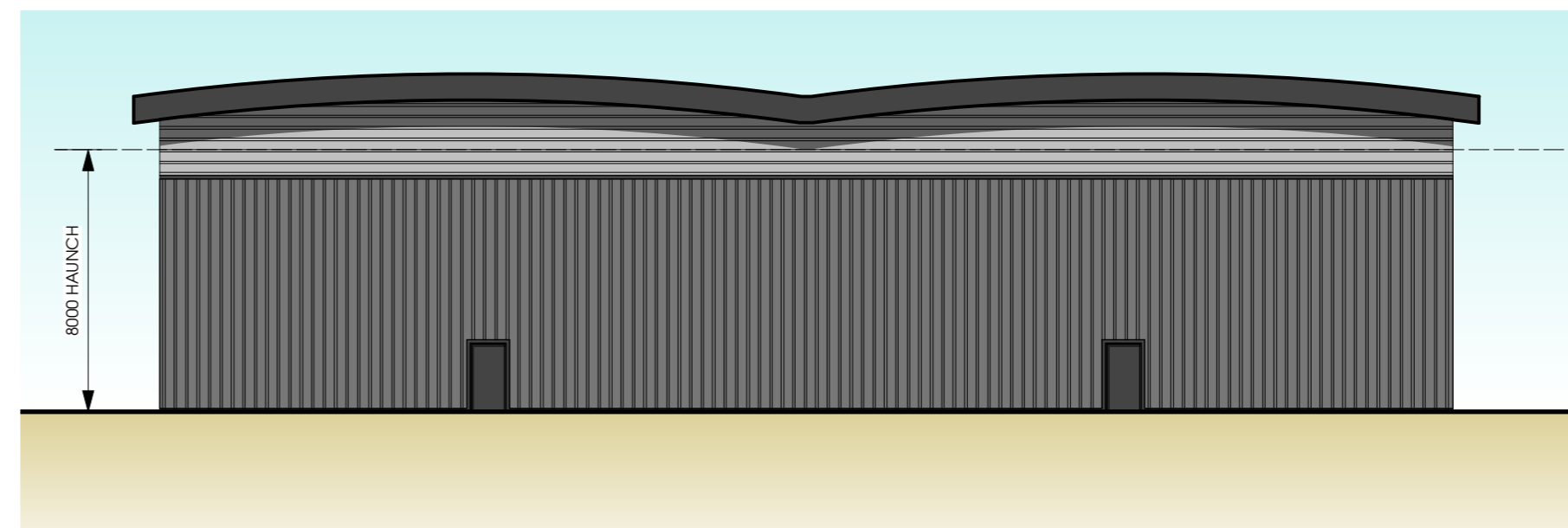
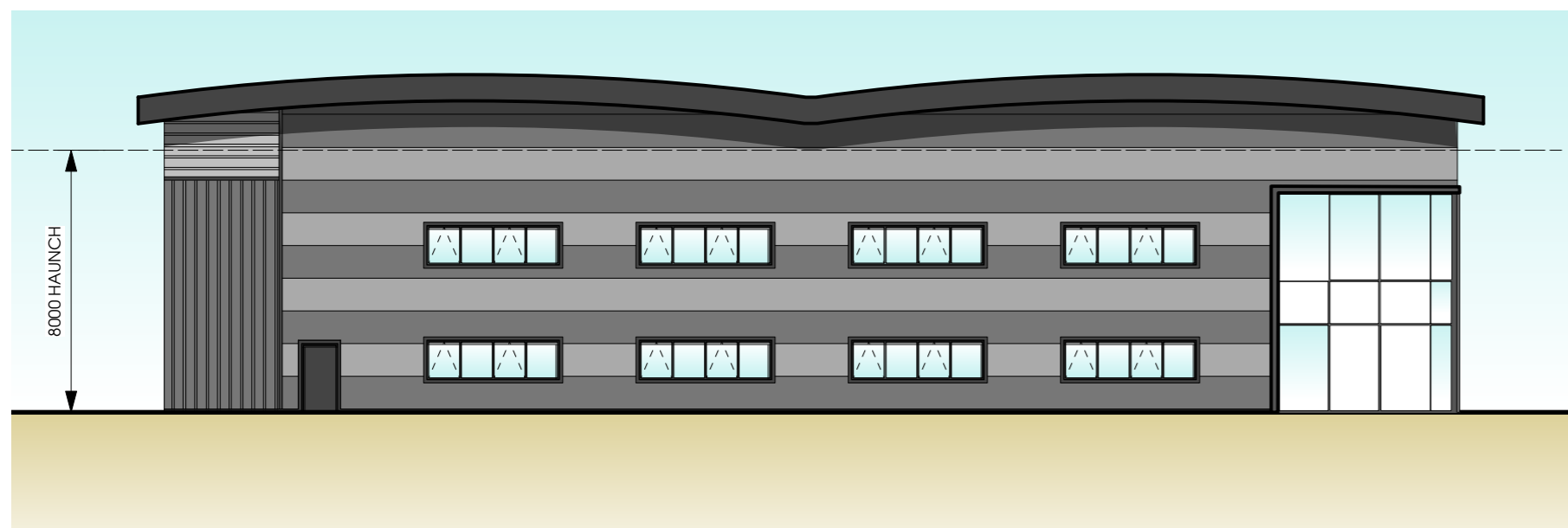
**WALLS**  
FULL HEIGHT CLADDING TO PERIMETER OF BUILDING. CLADDING ZONES TO BE EITHER:  
- HORIZONTAL COMPOSITE CLADDING  
- HORIZONTAL BUILT UP CLADDING.  
COLOURS - LIGHT - DARK GREYS (RAL COLOURS FROM STANDARD TATA HPS COLOUR RANGE)  
ALL TRIMS AND FLASHINGS TO BE ANTHRACITE GREY (RAL 7016)

**SERVICE DOORS**  
5m x 5m SECTIONAL SERVICE DOORS.  
COLOUR - ANTHRACITE GREY (RAL 7016)

**FIRE EXIT DOORS**  
GALVANISED STEEL DOORS AND FRAMES.  
COLOUR - ANTHRACITE GREY (RAL 7016)

**WINDOWS / ENTRANCE DOORS**  
PC ALUMINIUM DOUBLE GLAZED UNITS / MANUAL ACCESS DOORS WITH OPENING LIGHTS AS INDICATED.  
FRAME COLOUR - ANTHRACITE GREY (RAL 7016)  
SPANDREL PANELS INSTALLED LOCALLY TO GLAZING INLINE WITH OFFICE WALL SETTING OUT.  
FEATURE FLASHING TO WINDOWS AND ENTRANCE GLAZING TO BE PC METAL FLASHING.  
COLOUR - ANTHRACITE GREY (RAL 7016)

**EAVES / RAINWATER GOODS**  
SIPHONIC DRAINAGE SYSTEM BY SPECIALIST. FASCIA TO BE ALUMINIUM.  
COLOUR - ANTHRACITE GREY (RAL 7016)



Rev	Date	Description	Drawn
A	22.10.18	FE Door moved in line with FF office area changes. client name updated	AB

**htcarchitects**

York Place Studio  
8 Britannia Street  
Leeds  
LS1 2DZ  
T:(0113) 244 3457  
W: www.htcarchitects.co.uk  
E: info@htcarchitects.co.uk

client  
**Carbide Properties Ltd**

project  
**Opal Way,  
Stone**

drawing title  
**Unit 2  
Elevations**

date **October 2018**

status **Planning Issue**

scale **1:200 @ A2**

drawn **AB** checked **NT**

job no. **2202** dwg no. **P220** rev. **A**