

MATERIALS NOTES

ROOF
BARREL VAULT ROOF TO BE CONSTRUCTED USING BUILT UP STEEL CLADDING.
RADIUS SET TO INSIDE OF LINER SHEET AT 75m
COLOUR - GOOSEWING GREY BS10A05

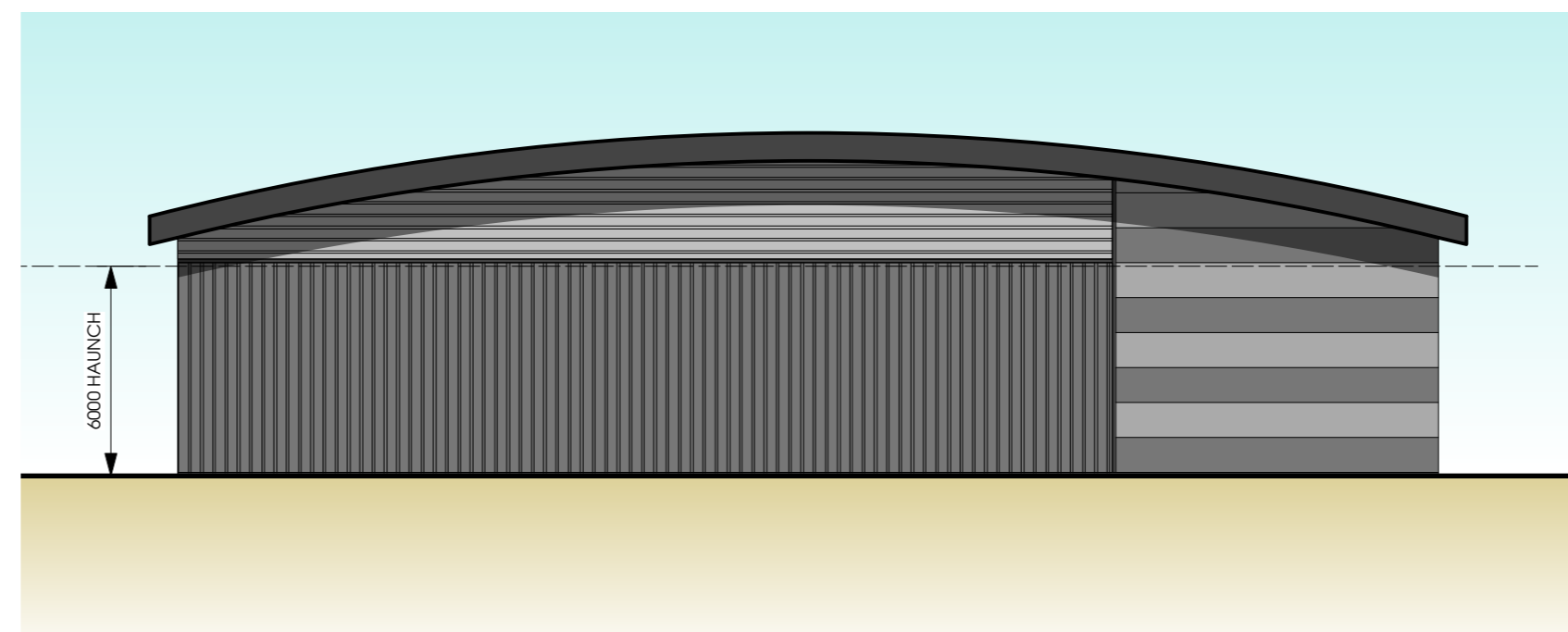
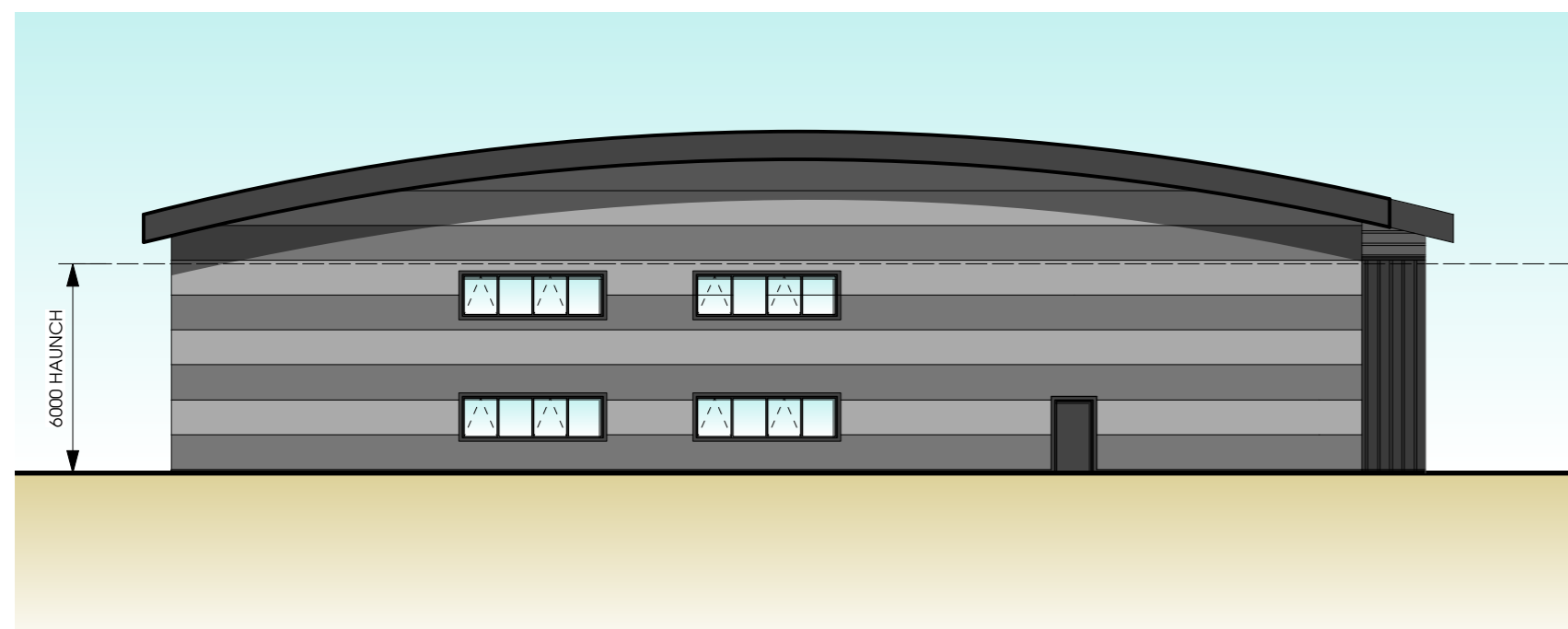
WALLS
FULL HEIGHT CLADDING TO PERIMETER OF BUILDING. CLADDING ZONES TO BE EITHER:
- HORIZONTAL COMPOSITE CLADDING
- HORIZONTAL BUILT UP CLADDING.
COLOURS - LIGHT - DARK GREYS (RAL COLOURS FROM STANDARD TATA HPS COLOUR RANGE)
ALL TRIMS AND FLASHINGS TO BE ANTHRACITE GREY (RAL 7016)

SERVICE DOORS
5m x 5m SECTIONAL SERVICE DOORS.
COLOUR - ANTHRACITE GREY (RAL 7016)

FIRE EXIT DOORS
GALVANISED STEEL DOORS AND FRAMES.
COLOUR - ANTHRACITE GREY (RAL 7016)

WINDOWS / ENTRANCE DOORS
PC ALUMINIUM DOUBLE GLAZED UNITS / MANUAL ACCESS DOORS WITH OPENING LIGHTS AS INDICATED.
FRAME COLOUR - ANTHRACITE GREY (RAL 7016)
SPANDREL PANELS INSTALLED LOCALLY TO GLAZING INLINE WITH OFFICE WALL SETTING OUT.
FEATURE FLASHING TO WINDOWS AND ENTRANCE GLAZING TO BE PC METAL FLASHING.
COLOUR - ANTHRACITE GREY (RAL 7016)

EAVES / RAINWATER GOODS
SIPHONIC DRAINAGE SYSTEM BY SPECIALIST. FASCIA TO BE ALUMINIUM.
COLOUR - ANTHRACITE GREY (RAL 7016)



Rev	Date	Description	Drawn
B	22.10.18	Windows removed due to reduced offices in Unit 1A, FE door moved. Client name updated.	AB
A	17.10.18	Glazing removed from gables and unit reduced to 6m haunch in line with client instruction	AB

htcarchitects

York Place Studio
8 Britannia Street
Leeds
LS1 2DZ
T:(0113) 244 3457
W: www.htcarchitects.co.uk
E: info@htcarchitects.co.uk

client
Carbide Properties Ltd

project
**Opal Way,
Stone**

drawing title
**Unit 1
Elevations**

date **October 2018**
status **Planning Issue**
scale **1:200 @ A2**
drawn **AB** checked **NT**
job no. **2202** dwg no. **P200** rev. **B**